

Core acceptance criteria

GEAR CONTROL UNIT



ECO LOGICAL
NOMICAL



WABCO
REMAN SOLUTIONS

General information

ACCEPTED



- Core must be in an off-vehicle condition.
- Core must meet acceptance standards established within this document.
- The following modules are accepted:
 - Gearbox Actuator for Daimler Gearbox: Full Unit, Lower part, Electronics
 - Gearbox Actuator for Volvo Gearbox : Full Unit, Lower (Mechanical) and Upper (with Electronics) Part
 - Pneumatic Gearbox Actuator for ZF Gearbox : Full Unit, Lower (Mechanical) and Upper (with Electronic) Part
 - Hydraulic Gearbox Actuator for ZF Gearbox : Full Unit

REJECTED



- The core is a not complete unit and disassembled or altered in any manner (expect mechanical/actuation and electronic parts case).
- The core is damaged by non-operational causes such as car crash damage, rough handling, fire or improper removal, crack, stuff losses.
- There has been prior attempt at repair/rebuilding the component.

Acceptable part numbers

- The cores of the Pneumatic Gearbox Actuator for **ZF Gearbox** cores must concern the following Part Numbers:

WABCO Part number	WABCO REMAN Part number
421 355 011 0	421 355 011 R
421 355 012 0	421 355 012 R
421 355 015 0	421 355 015 R
421 355 022 0	421 355 022 R
421 355 023 0	421 355 023 R
421 355 950 2	421 355 950 R

- The cores of Gearbox Actuator for **Daimler Gearbox** must concern the following part numbers:

WABCO Part number	WABCO REMAN Part number
421 353 001 0	421 353 007 R
421 353 002 0	
421 353 003 0	
421 353 004 0	
421 353 005 0	
421 353 006 0	
421 353 007 0	
421 353 400 0	421 353 400 R
421 353 401 0	
421 353 402 0	
421 353 403 0	
421 353 404 0	

- The cores of the Hydraulic Gearbox Actuator for **ZF Gearbox** must concern the following Part Numbers:

WABCO Part number	WABCO REMAN Part number
477 001 030 0	477 001 030 R
477 001 031 0	477 001 031 R

- The cores of Gearbox Actuator for **Volvo Gearbox** must concern the following part numbers:

WABCO Part number	
12 V	24V
421 364 001 0	421 365 000 0
421 364 002 0	421 365 002 0
421 364 003 0	421 365 004 0
421 366 001 0	421 365 005 0
421 366 002 0	421 365 006 0
421 365 945 2	421 365 007 0
	421 365 008 0
	421 365 009 0
	421 365 010 0
	421 365 011 0
	421 365 012 0
	421 365 013 0
	421 367 001 0
	421 367 002 0
	421 369 001 0

Acceptance criteria

ACCEPTED



Surface Corrosion



ACCEPTED



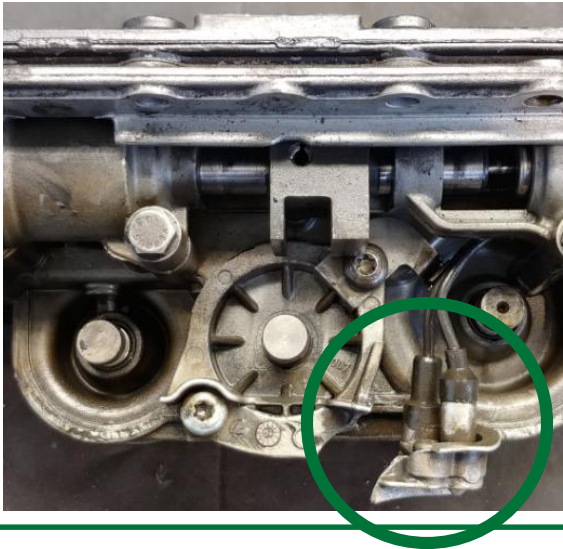
Small signs of hit



ACCEPTED



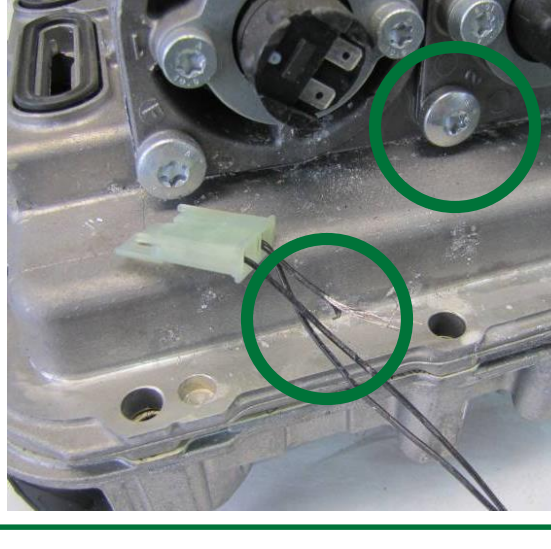
Broken or damaged Cylinder Cover



ACCEPTED



Cut wires



Acceptance criteria

ACCEPTED



Scratches on external surface



ACCEPTED



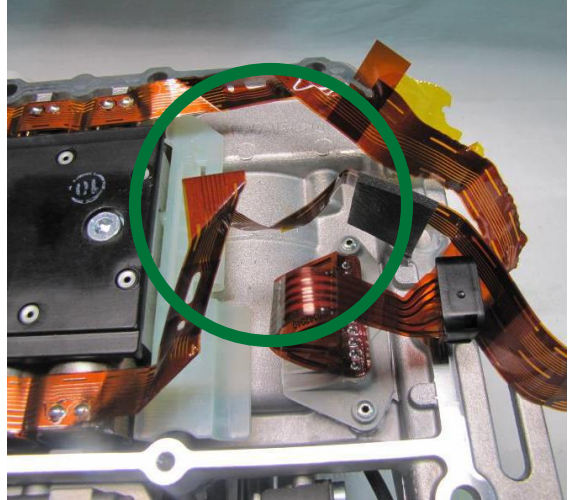
Scratches on external surface



ACCEPTED



Damaged or broken, cut ribbons

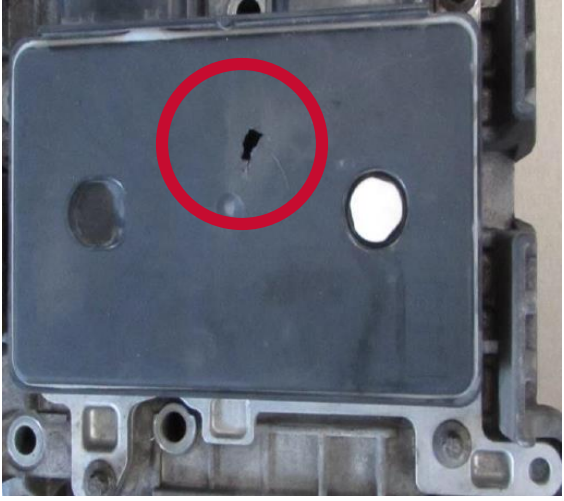


Acceptance criteria

REJECTED



Damages or signs of hit on ECU



REJECTED



Damaged connector



REJECTED



Hard damages of ECU cover



REJECTED



Serious damages to the body.
Missing material



Acceptance criteria

REJECTED



Significant signs of hit on external surfaces



Your used part can go for *a second life!* Return it to WABCO and get your refund!

When you buy remanufactured part from WABCO Reman Solutions and return your used cores to us, you will get a **refund!** On top of that, by producing less waste, you will also **save on costs of disposal** and **benefit the environment.**



THIS IS HOW IT WORKS:

- **Use the box** of the remanufactured parts to return your used cores.



- **Contact your authorized WABCO partner** www.wabco-auto.com/findwabco to pick up the box.
 - **You will receive a refund** for the surcharge you've paid with the purchase of your remanufactured parts.
- It's as simple as that!**

For more info, see myWABCO
<https://www.am.wabco-auto.com>

WABCO
REMAN SOLUTIONS