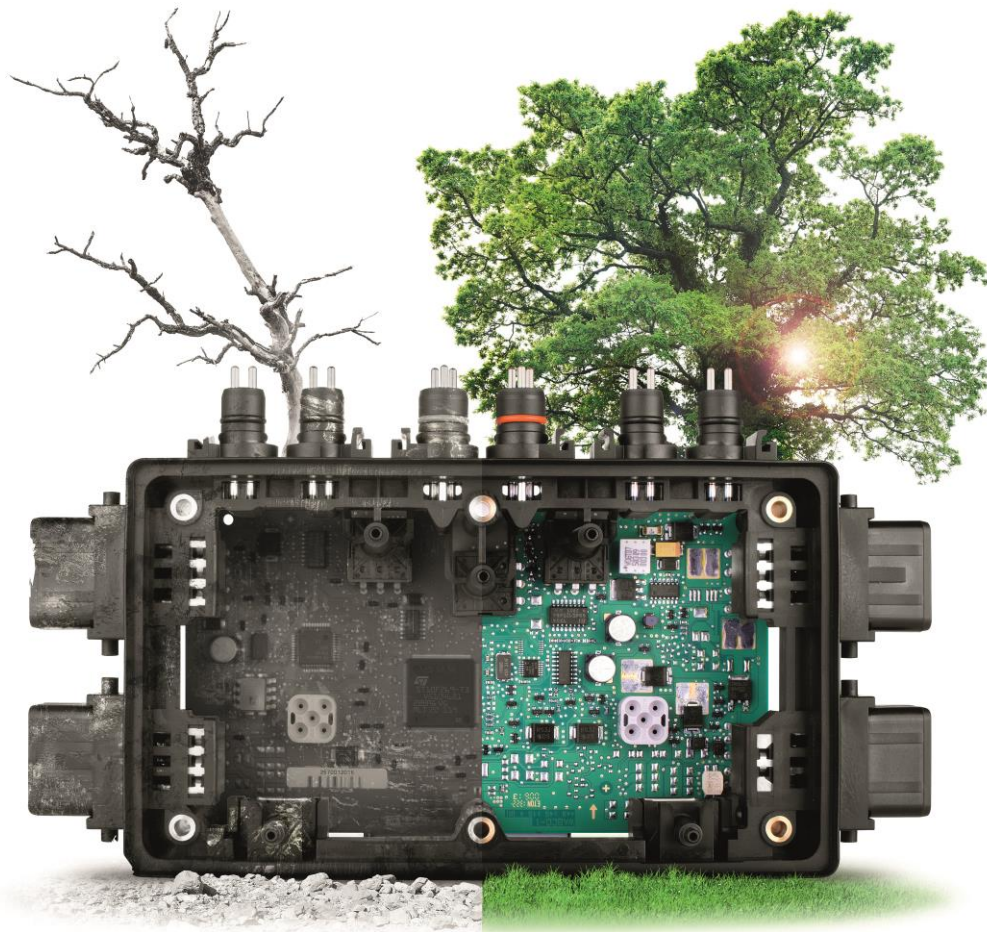


# Core acceptance criteria

## TEBS-E



**ECO** LOGICAL  
NOMICAL



**WABCO**  
REMAN SOLUTIONS

# General information

## ACCEPTED



- Core must be in an off-vehicle condition.
- Core must meet acceptance standards established within this document.
- Core mechanical integrity must remain intact (no holes, cracks, disassembled components)
- Any electronic inside core must not have contact with environmental pollutants, especially water.

## REJECTED



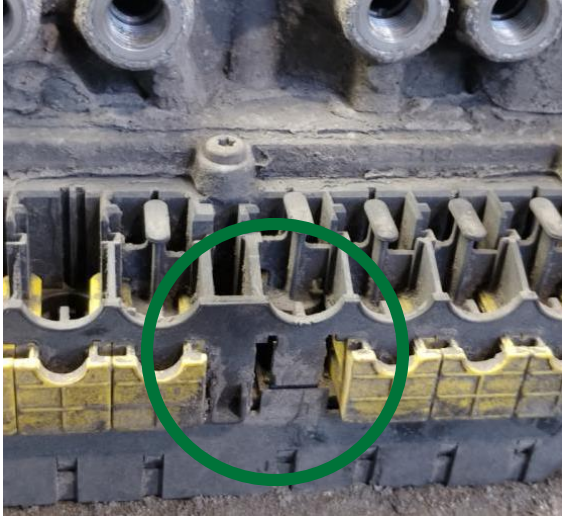
- The core is a not complete unit and disassembled or altered in any manner
- The core is damaged by non-operational causes such as car crash damage, fire, flood, crack.
- The core has been improperly repaired / serviced.

# Acceptance criteria

**ACCEPTED**



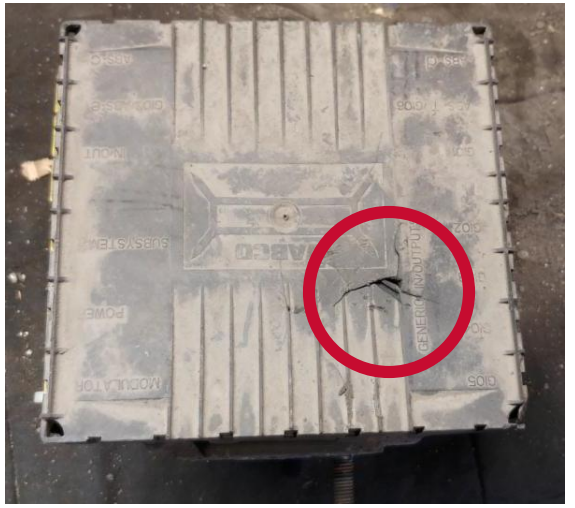
Missing protection covers and plugs



**REJECTED**



Holes, cracks in ECU cover



**ACCEPTED**



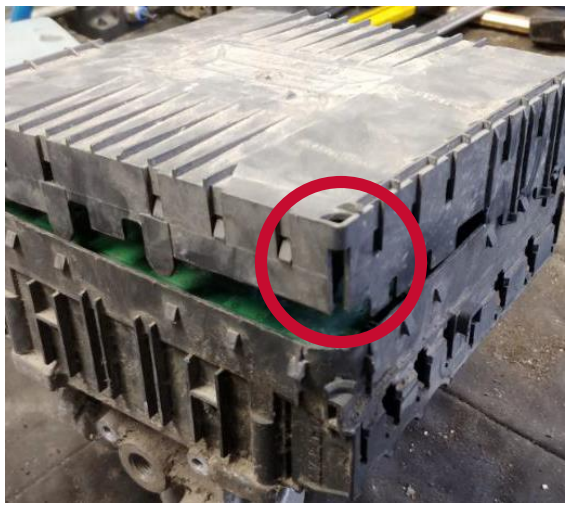
Damaged ribs on the ECU Cover



**REJECTED**



Partially dismantled

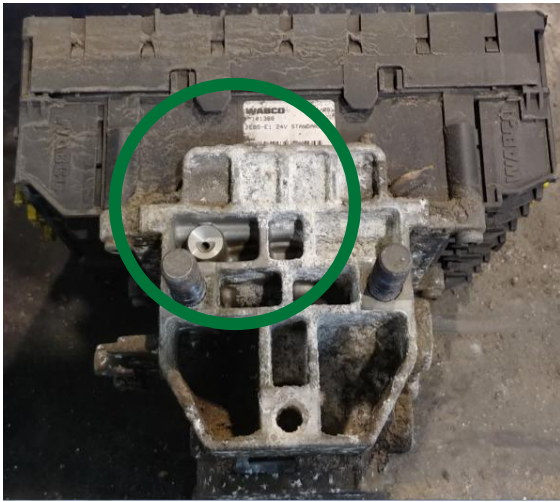


# Acceptance criteria

**ACCEPTED**



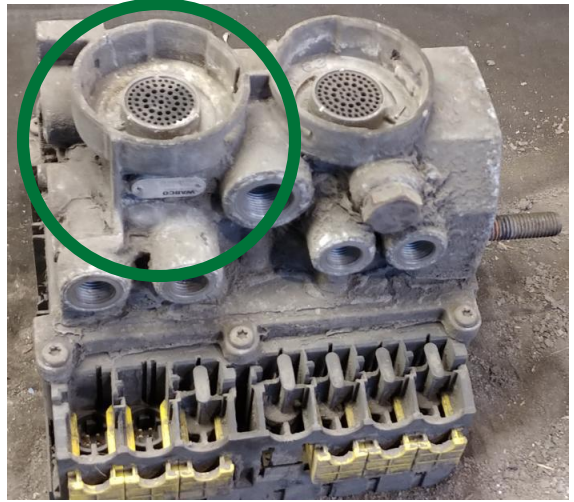
Surface corrosion



**ACCEPTED**



Missing silencers



**ACCEPTED**



Missing studs



**ACCEPTED**



Damaged ports



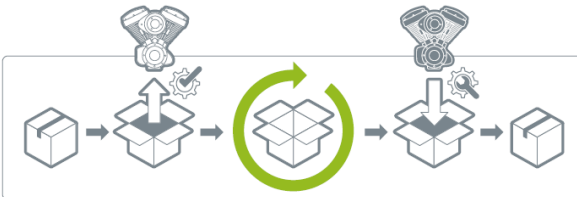
# Your used part can go for *a second life!* Return it to WABCO and get your refund!

When you buy remanufactured part from WABCO Reman Solutions and return your used cores to us, you will get a **refund!** On top of that, by producing less waste, you will also **save on costs of disposal** and **benefit the environment.**



## THIS IS HOW IT WORKS:

- **Use the box** of the remanufactured parts to return your used cores.



- **Contact your authorized WABCO partner** [www.wabco-auto.com/findwabco](http://www.wabco-auto.com/findwabco) to pick up the box.
  - **You will receive a refund** for the surcharge you've paid with the purchase of your remanufactured parts.
- It's as simple as that!**

For more info, see myWABCO  
<https://www.am.wabco-auto.com>

**WABCO**  
REMAN SOLUTIONS