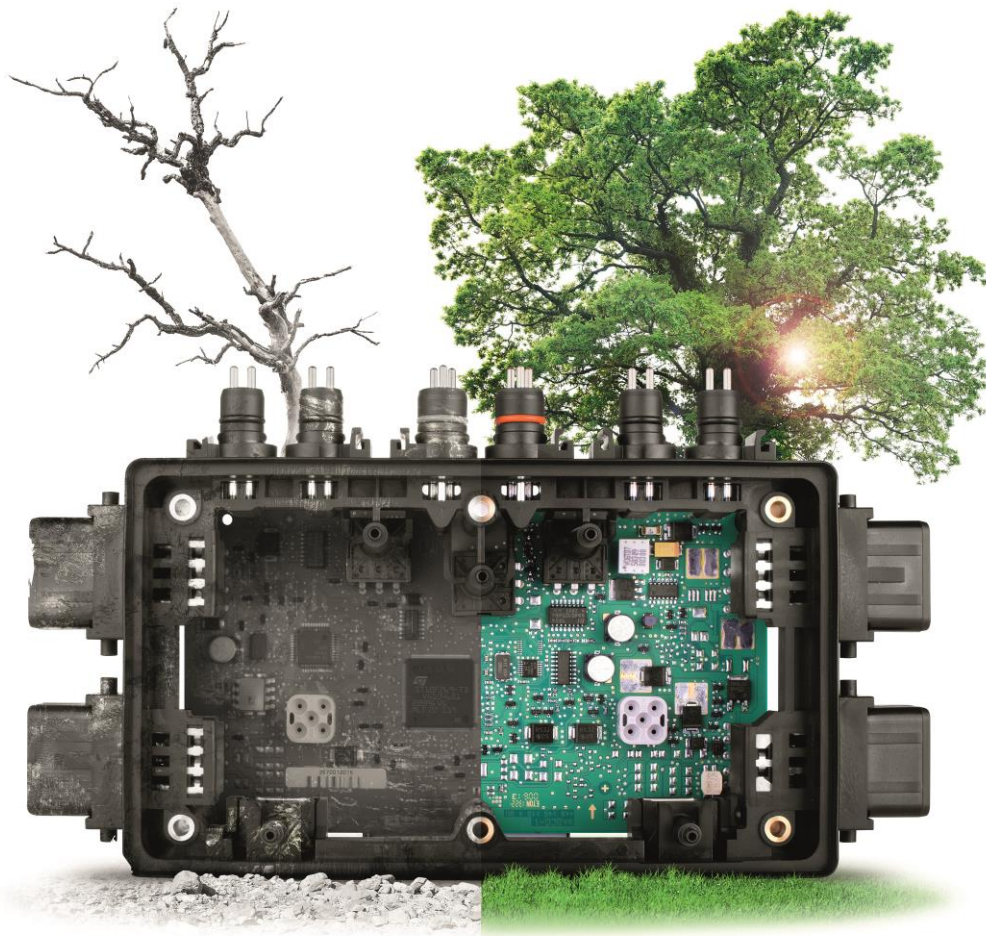


Core acceptance criteria

TEBS-D



ECO LOGICAL
NOMICAL



WABCO
REMAN SOLUTIONS

General information

ACCEPTED



- Core must be in an off-vehicle condition.
- Core must meet acceptance standards established within this document.
- Core mechanical integrity must remain intact (no holes, cracks, disassembled components)
- Any electronic inside core must not have contact with environmental pollutants, especially water.

REJECTED



- The core is a not complete unit and disassembled or altered in any manner
- The core is damaged by non-operational causes such as car crash damage, fire, flood, crack.
- The core has been improperly repaired / serviced.

Acceptance criteria

ACCEPTED



Surface corrosion



ACCEPTED



Painted device



ACCEPTED



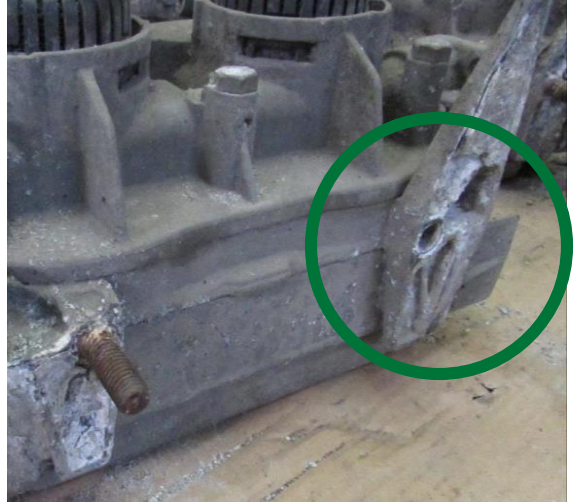
Missing silencers



ACCEPTED



Missing studs



Acceptance criteria

ACCEPTED



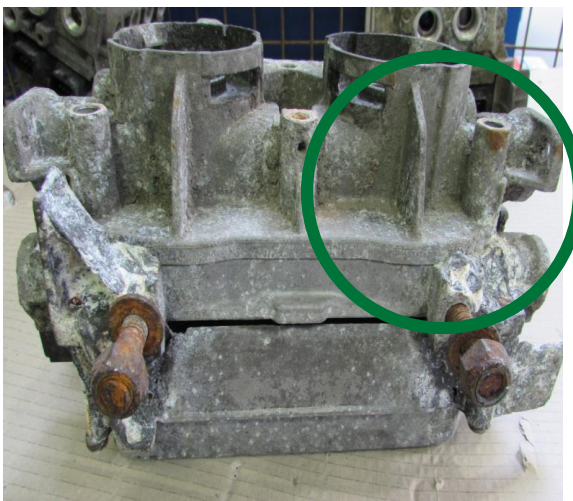
Damaged external cover elements



ACCEPTED



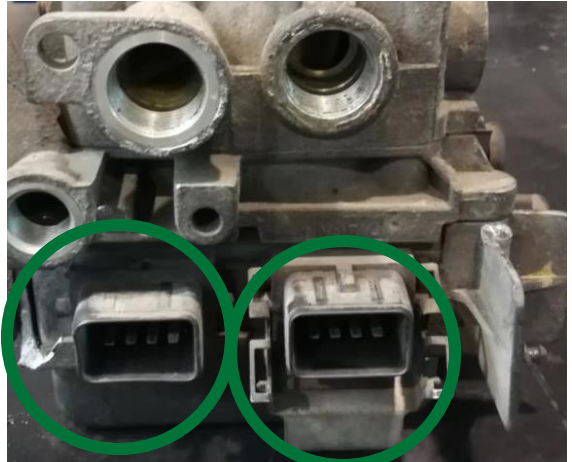
Damaged wings



ACCEPTED



Damaged connectors, missing covers and hangers

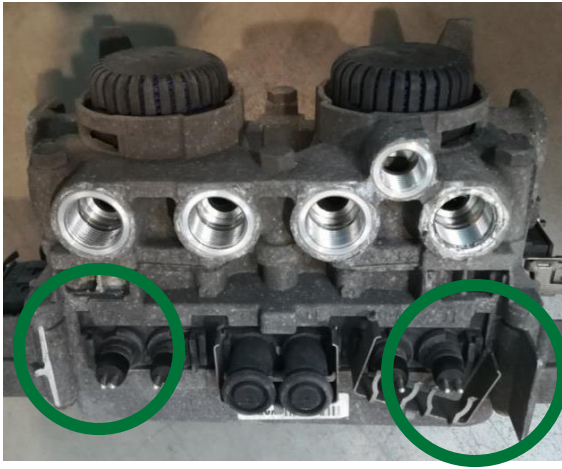


Acceptance criteria

ACCEPTED



Damaged connectors, missing covers



ACCEPTED



Damaged ports, scratches on the sealing surface



Acceptance criteria

REJECTED



Holes in ECU cover



REJECTED



Holes in ECU cover



REJECTED



Partially dismantled



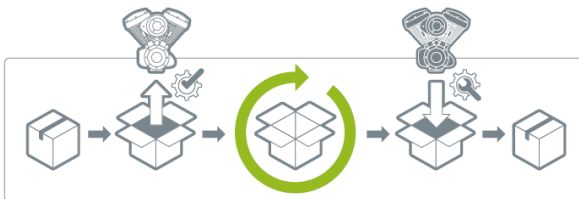
Your used part can go for *a second life!* Return it to WABCO and get your refund!

When you buy remanufactured part from WABCO Reman Solutions and return your used cores to us, you will get a **refund**! On top of that, by producing less waste, you will also **save** on costs of disposal and **benefit the environment**.



THIS IS HOW IT WORKS:

- **Use the box** of the remanufactured parts to return your used cores.



- **Contact your authorized WABCO partner**
www.wabco-auto.com/findwabco to pick up the box.
 - **You will receive a refund** for the surcharge you've paid with the purchase of your remanufactured parts.
- It's as simple as that!**

For more info, see myWABCO
<https://www.am.wabco-auto.com>

WABCO
REMAN SOLUTIONS